



**Bella
Vista**
Community
Concert
Band

History

1985 – 2015

BVCCBand history was started by M. D. McKinney and that is Part 1. Part 1 is followed by an Addendum. Part 2 (from 1995 to 2012) was done the winter of 2012 by Bobby Power, band historian. It is in a scrapbook form with many pictures. Now 2015 history has been added. Following the history sections are a) list of officers; b) Obituary info. In this form the history book can easily be added to in future years.

A History

of

Bella Vista Community Band

by

M.D. McKenney

1995

The following nine (9) pages are Mac's history. It has been typed into computer with a few typo's corrected. Following Mac's history, ending in 1995, is an addendum to it. The Addendum is in scrapbook form with pictures. The Addendum was finished in 2012 by Bobby Power.

A History of the Bella Vista Community Band

By M. D. McKenney

July, 1994

As the age of life expectancy continues to climb and as economic and other conditions are influencing senior citizens to retire earlier than the usually accepted age of sixty five, there are more and more areas in which there is a concentration of retirees. Possibly none is more widely known, or as typical of what an ideal retirement community should be, than Bella Vista, Arkansas.

Many special activities are available in such places but having a community band made up almost entirely of retirees is likely not very usual. This writer has not done enough research to make that a scientifically defensible hypothesis, however the following observations might lead to that conclusion.

Prior to retirement, my wife and I did a great deal of study and visited many places where we thought we might like to retire. We carefully weighed the pros and cons and made careful comparisons of their traits. After having traveled extensively in Colorado and South Dakota's Black Hills – and exploratory visits to Florida, Arizona and North Carolina, we decided to settle in Bella Vista. In Arkansas we also examined other areas of the northern part of the state.

When we retired we had a 28 foot travel trailer and immediately began to tour the parts of the country we were not familiar with. In so doing, we had our trailer in all of the fifty states with the exception of Hawaii, Rhode Island, and Connecticut. While traveling, we took every opportunity to examine carefully the retirement communities claimed in those states. We found that none of them could come close to what we found in Bella Vista. One of the questions I asked many times related to the possibilities of involvement in music activities of the retirement community or even in the surrounding community. I found almost no favorable response and lost interest quickly in that regard.

To my knowledge there is only one other community band which was founded by retired musicians and it is in Florida. It was brought to our attention by Dr. Bill Reiff, who plays piccolo and flute in the

Bella Vista band. During his winter months Bill plays with a band made up mainly of retirees in Lake County Florida. This band is sponsored by a community newspaper.

I believe I am safe in saying that the Bella Vista Community Band a very unique group and has earned a place in our local history. I am endeavoring to write an account of how it developed.

In 1985 several factors came together which brought about the first attempt to establish a Bentonville-Bella Vista Community Band. Though there is a downward trend, there was a time approximately just before and after World War II when every community of sufficient size to support and fill a community band had one. In 1985 several citizens of this area, who were products of such bands in their previous home town, identified a cultural element missing in the area. Therefore a group of musicians began to consider whether or not a band could be formed using personnel available in the area generally from Bentonville, Bella Vista and Rogers.

Denny Kelliher, a retired band instructor and a professional musician who had performed in dance bands, bands for ice shows, rodeos and circuses, had just moved to the Village from Tulsa, Oklahoma. He was not prepared to completely abandon this important area of his life and was eager to pursue music in any way possible. He immediately began playing with the Moonshiner band. This group was formed a few years earlier mainly for the fun of playing but, as the band progressed, it began to play for dances in the area.

In 1985 there were some other factors which came together to add to Kelliher's interest. Mike Brown, a newspaper man who had a music background, joined with Kelliher to co-direct a small group of interested musicians. In addition, David Shaw, one of those interested musicians and director of band at Bentonville High School, offered the group the band room as a rehearsal center along with the use of some of the band library and some of the large instruments needed by a band but seldom owned by individuals. Such instruments were bass drum, tuba, baritone and French horn. Brown moved to Siloam Springs shortly after the band was formed. The original nucleus of the band is composed of those who rehearsed at some time during residence at the high

school. They are:

Name	Instrument	Residence
Mike Brown, co-director		Siloam Springs
Karen Brown	clarinet	Siloam Springs
Bob Brundle	trumpet	Bella Vista
Lloyd Collins	tuba	Bentonville
Ceda Dussair	trumpet	Bella Vista (moved)
*Nevin Ellis	trumpet	Bella Vista
Frank Elder	clarinet	Bella Vista
*Denny Kelliher (co-director)	trumpet	Bella Vista
*Brenda Kilby	clarinet	Jane, MO
Curt Loyd	drums	Bentonville
Wendell McIntire	trumpet	Bentonville
*M.D. McKenney	tuba	Bella Vista
*Bobby Power	clarinet	Bentonville
*Bill Reiff	flute, piccolo	Bella Vista
*Rob Sabata	trombone	Rogers
David Shaw	trombone	Bella Vista
Yvonne Shaw	flute	Bella Vista
Sheila Zeiglemeir	clarinet	Rogers

*Members continuing to play with the band in 1994.

By the fall of 1987 it was no longer possible for the group to use the band room at the high school so the activity was suspended for a few months. It was re-organized when Kelliher gained the approval of the Bella Vista POA to use Riordan Hall on a regular basis for an evening rehearsal. Thus the band got a second life but needed resources in addition to its personnel and place to practice. Kelliher had accumulated a basic library as the result of playing with so many groups and was able to buy the library of a band or inheriting it when the group dissolved. This was only a small part of the library necessary to continue the band. Some of these arrangements being used cost only one-tenth of the current cost for similar music.

The following is a list of those members who joined the band after It began rehearsals at Riordan Hall in 1988:

Nina Clock	all woodwinds	Rogers-Bella Vista
Ron Beall	saxophone and clarinet	Bella Vista
Bud Crees	tenor saxophone	Bella Vista
*Frank Erwin	clarinet & also saxophone	Bella Vista
*Alton Foster	trombone	Bella Vista
Cynthia Frihart	bass drum	Bella Vista
*Dan Holloway	trombone	Rogers
Jim Mahoney	all woodwinds	Rogers (moved)
Chuck Jennings	drums	Bentonville
John Miller	trombone	Bella Vista
Harold Pearson	drums	Bella Vista
Rex Peters	clarinet	Bentonville
*Gene Persell	saxophone & clarinet	Bentonville
*Lee Peterson	baritone	Bella Vista
*Gail Power	clarinet	Bentonville
*Bob Speer	trombone	Bella Vista
*Lee Shriner	clarinet	Bella Vista
Elin Stene	snare drum	Bella Vista
Ken Smykill	bass drum	Bella Vista
Karl Smykill	drums	Kansas (visitor)
Rollie Sease	trumpet	Bella Vista
Jack Terry	trumpet	Bella Vista
*Chuck Whitford	baritone & trombone	Bella Vista
Pearl Knight	trombone	Bella Vista
Wally Dressler	bass clarinet	Bella Vista
Leola Kirkland	bass drum	Bella Vista
*Members continuing to play with the band in 1994		

In order for the band to exist there had to be some enabling resources available such as music and money to add music, a bass drum and some of the large instruments such as a tuba. Ron Beall had been a member of an American Legion post in Council Bluffs, Iowa and knew of some equipment available when that post's band was disbanded. He acquired it at a good price. In addition, Alton Foster, who moved to Bella Vista from Garden City, Kansas, where he had owned a music store, made some used equipment available. The band has no guaranteed financial support as do many similar groups in an incorporated city. Some voluntary support became available

and Kelliher established a band bank account into which contributions would be placed.

An organization which developed within the band was a money maker for the entire band as it contributed its earnings to the band account. This group, known as the Hungry Five, was first formed at the request of the Bates Hospital Foundation to play for its fund raising diner, Fin and Feathers. They suggested that some kind of band would add to their program. Kelliher complied since he had in his library a set of arrangements written for a German type band which also included some Dixieland tunes. Their first performance took place in 1985 and the group was composed of Frank Erwin and Ron Beall, clarinets; David Shaw, trombone; Lloyd Collins, tuba; and Kelliher, trumpet. Later on there were personnel changes, but the group continued to exist and perform. Though the usual line-up became pretty firm, there always had to be substitutes in the wings for any given performance. Since Bella Vista's population is so mobile, the director is constantly adjusting his personnel. Regular members in 1986 were: Erwin, Beall plus Paul Austin on trombone and Mac McKenney on tuba. Alternates who often performed for an absent Member were clarinetists Gene Percell, Nina Clock, Bobby Power and Marjorie Hemphill; trombonists Alton Foster, Chuck Whitford and Bob Speer and Al Bulin on tuba. The current membership is Kelliher, Hemphill, Percell, Whitford, and McKenney.

Through the efforts of all the above listed musicians, the Hungry Five earned a total of \$1,050. Their income was derived from performing for the following organizations: Bella Vista Nebraska Club, Bella Vista Crime Watch, Bella Vista Wisconsin Club, Bella Vista Scandinavian Club, Bella Flytyers Club, Bella Vista Village Business Association, Bella Vista St. Bernard's Men's Club and the Northwest Arkansas Rehabilitation Center.

Direct contributions to the band total \$1,712.50 as of July, 1994. Sources for those are: Community Church Picnic, Wal-Mart Warehouse #4, Bella Vista AARP, Bella Vista Community Church, Charlton Square Business Association, Bella Vista Village Art Club, Bella Vista Retired Officer's Association, Bentonville-Bella Vista Lions Club, the Nomad Shrine, Bella Vista Iowa Club, a private donation from a Bella Vista couple and a memorial for the spouse of one of the band

members.

The "in-kind" support given by the Bella Vista Community Church by providing a rehearsal room for the past several years is invaluable. For this the band members play a concert for the church's annual picnic at Blowing Springs Park.

The members who joined the band after it began rehearsing at Community Church in 1989:

James Brandenburg	drums	Bentonville
*Al Bulin	sousaphone	Bella Vista
Lloyd Baker	clarinet	Bella Vista
*Roger Bushee	trombone	Bella Vista
* Marlene Cracraft	clarinet	Bella Vista
* Rose Christensen	drums	Bella Vista
Charles Deitrich	trombone	not known
Amy Dale	flute	Bentonville
Brian Freeman	trumpet	Bentonville
Brook Garrett		
*Hurley Girard	drums	Bella Vista
*J. D. Highfill	drums	Bella Vista
* Keith Harris	trombone	Bella Vista
Gerald Hemphill	trumpet	Bella Vista
*Marjorie Hemphill	clarinet	Bella Vista
Ron Hubbard	French horn	
Chuck Jennings	trumpet	Bentonville
*Ron Koelling	trumpet	Bella Vista
Robin Koelling	flute	Bella Vista
Brad Lawson	drums	Bella Vista
*Carol Layman	French horn	Bentonville
*Rosella Mills	flute	Bella Vista
Cindy Malone	clarinet	Bella Vista
Harley Malone	saxophone	Bella Vista
Kim McMillan	drums	Bentonville
Jack Mitchell	drums	Bella Vista
Ann Nelson	saxophone	Bentonville
Charlie Pierson	saxophone	Bella Vista
Carol Plemmins	French horn	Bella Vista
Autumn Pevznor	saxophone	Bentonville

*Ton Raber	baritone	Bella Vista
*Sarah Raber	clarinet	Bella Vista
Millie Pevznor	trumpet	Bentonville
*Bill Poore	saxophone	Bella Vista
*Bill Rees	flute	Bella Vista
*Eileen Rees	string bass	Bella Vista
*Nona Storck	saxophone	Bella Vista
Dory Sabata	French horn	Bentonville
Rick Schmidt	trombone	
*Dick Stitzel	trumpet	Bella Vista
*George Sheldon	trumpet	Bella Vista
*Joyce Sheldon	trumpet	Bella Vista
*Jack Tidwell	trumpet	Bella Vista
Lee Williams	drums	Bella Vista
Phil & Mary Dutcher	sound system	Bella Vista
*Members still active July, 1994		

The first concerts given by this band were in July of 1985 at the Old High Elementary Auditorium followed by another later in July at the Bentonville Square. In 1986 Kelliher was asked if a band could be convened to provide music for the Constitution Day event to be held at the Fire/Police Station. Kelliher asked all members of the Moonshiner band to participate and added other musicians to the group such as Max Hipwell and Lee Peterson.

After sufficient rehearsals at Riordan Hall, the band was asked to play the first of the "Pops" concert series approved by the POA management. That concert was part of a dedication service held at the Metfield Clubhouse. The flag pole provided by the Bella Vista Retired Officer Association was to be dedicated. That event occurred July 4, 1988 and established a tradition for the band. Every year thereafter the band has played a concert at 10:30 A.M. at Metfield as part of a Fourth of July celebration at the club. Other traditional events for the band are the Memorial Day and Veteran's Day services at the Bella Vista Cemetery sponsored by the Bella Vista American Legion and Veterans of Foreign Wars posts.

Each year the concert series begins with the concert given at the cemetery on Memorial Day and continues until early August when the

band takes a break for members' summer travel. The band plays its final concert in conjunction with the Veterans Day service. At that time the group takes its winter break and reconvenes in early March when it begins to prepare music for the next concert season.

Only two unusual circumstances come to mind in recalling the many concerts given. During the first full year of concerts one was scheduled to be played on the east "porch" of the Metfield Clubhouse.

Shortly after the band began to set up and the crowd gathered with their customary lawn chairs, the rains came suddenly. Freda Lemmon, club manager, announced immediately that the concert could be given inside as soon as furniture could be re-arranged. The band was set up at one end of the dining room and the remainder provided seating for the audience plus standing room around the edges.

On another occasion, at a concert being played at Metfield park, someone "didn't get the word" and chairs weren't delivered for band members for the concert. After much consternation, members decided that in show business tradition "the show must go on" and played the concert standing, a difficult feat for those with large instruments.

At the time of this writing, July 1994, there are 39 members who are on what is considered to be the active list. This means they usually play at least two concerts during the year and attend a few rehearsals. However there are seldom more than 25 members present at a given time. The biggest challenge the director faces is not knowing who will be available for a given rehearsal or concert. The leverage school and college band directors had to keep their students in regular attendance no longer exists in this group of very mobile, volunteer musicians. Director Kelliher is often forced to change almost the entire program he had planned when he surveys the empty chairs at rehearsal. Most make every effort to plan ahead and let the director know of their absence in advance but that is not always possible.

A brief study of the personnel playing with the band in 1994 reveals that all played in a high school band and about half in a college band. The professions or vocations listed from which members have retired or are currently engaged are as follows:

Architect
Banking
Blood Center Coordinator
Chemical Engineer
Cooper Community Administration
Certified Public Accountant
Design Engineer
Dentist
Electrical Engineer
Current High School Student
Librarian
Music Educator
Optometrist
Office Purchasing & Personnel
Physician
Power Company Officer
Postal Service Superintendent
School Administrator
Current University Student
Systems Manager
Teacher
Wal-Mart Home Office Personnel

In reviewing the rosters of personnel who have at one time or another been members of the band, only three members are known to be deceased. Two by the usual maladies of old age, but one by a most untimely accident while attending the U.S. Naval Academy.

It is anticipated that this band will continue to prosper and that another chapter can be added to this account in a few years.

This history by McKenney has been carefully transferred to MS Word 2010 during summer of 2012. Typos only were changed. Acting Historian Bobby Power.



Adduntio 1985 to 1996
Bella Vista Concert Band History

Some of the dates are approximate

Processed on PC using Word 2010

Summer 2012



Picture of group on trailer above labeled 12-1988. Denny Kelliher (below) Memorial Day, 1992



D. Sabata ..High School students were always part of band.
 Rob Sabata (Father) playing trombone.



Band Concert

Dear Vista:

As a member of the Bella Vista Community Band, I was humiliated at the treatment the band members received at our concert last Tuesday night at Metfield Park. Since no chairs were provided for us to sit on, we were forced to stand up while playing our concert. Not an easy task with some instruments.

We band members work hard every Monday night to prepare a fine concert for the people of Bella Vista. Nearly 200 people were in attendance last Tuesday night.

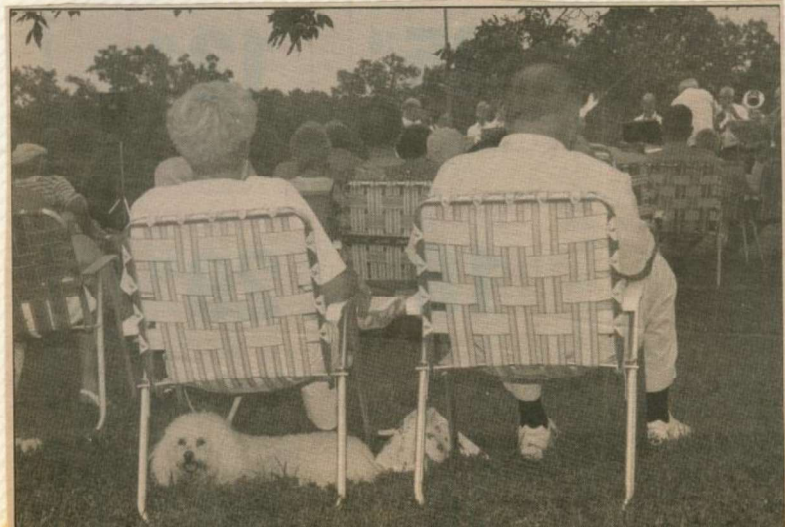
Several times in years past, our chairs have arrived after the time for our concerts to begin. Why? I think a public apology is in order.

Robert S. Speer
Bella Vista

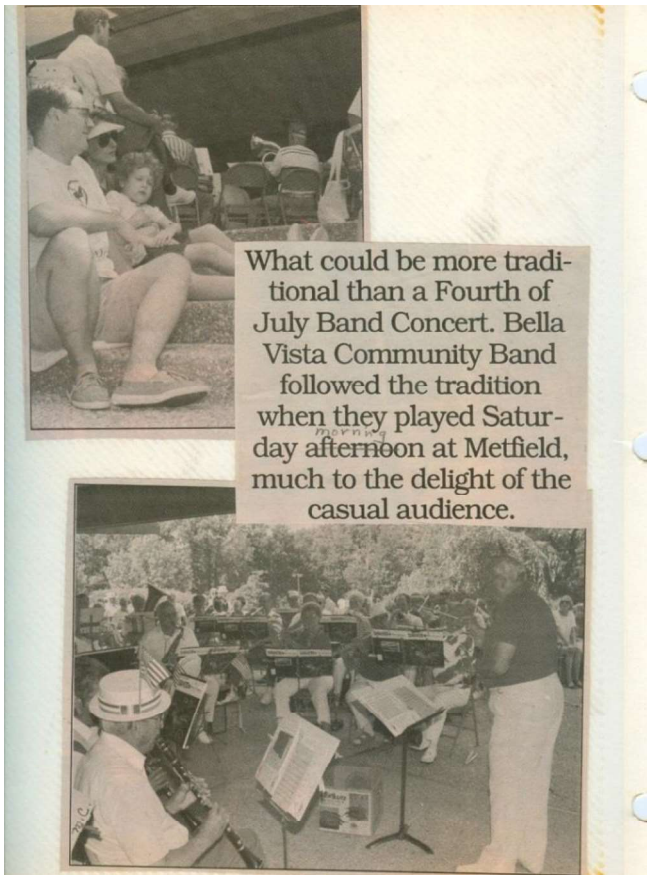


Photo by Gerry W. Lohr

Al Bulin, a member of the Bella Vista Hungry Five Band, plays at the Wednesday, May 1, grand opening of the Bella Vista AARP Recycling Center. The new, larger recycling center is located across the street from the old center and offers more space and more equipment.



Al Bulin Sousaphone



Lower Picture has Frank Erwin with Flag in hat to Denny's Left



Metfield Porch (Lower Right) Left to Right: Rosella Mills, Bill Rees; Second row – Mike Wooters, Nevin Ellis, Jack Tetford, Ron Koelling; Back Row – Dan Holloway, Roger Bushey, Rob Sabata, Robert Speers

Wista July 26 1994



Community camera

New band members

Bella Vista Community Band director Dennis Kelliher, center, poses with new band members Tom and Sarah Raber, left, and Joyce and George Sheldon, right. The Rabers, who are from Wisconsin, and the Sheldons, from Iowa, joined the band the same night -- the day before playing in the July 12 concert. Far right, Mike Wooters has played with the band since last winter and is a Bentonville student.

Band continues concert schedule

The 1994 Bella Vista Community Band Summer Concert in the Parks schedule continues with a concert on

July 26 at Riordan Hall, an Aug. 9 concert at Branchwood, and an Aug. 23 concert at Metfield.

All concerts begin at 6:30 p.m. and conclude at 7:15 p.m. For more information, call Kelliher, 855 - 9263.

Community Band plans for big summer

Sally Carroll
Weekly Vista Reporter

The sun still burned brightly, but the air seemed cooler. A gentle breeze ruffled the leaves of the big oak tree. Folks who were out and about this evening were settled back in their lawnchairs, and some children who were on hand, relaxed, laying in the grass. Sounds of a band—trickles of notes—filled the air as the Bella Vista Community Band opened its eighth season of its Concert in the Park series.

The band played last week at Metfield Clubhouse, its first concert of the season. The parking lot was filled with cars, as were the sideroads, and the many listeners seemed to be pleased at the evening concert—provided to villagers as a free service.

Bandleader Denny Kelliher says the Community Band is facing its busiest summer schedule ever, an "aggressive schedule" with a total of seven concerts planned.

Comprised of nearly 30 members, the band observes its practice season from March to Veteran's Day. Kelliher says band members recently took a vote and decided to actively perform for the village this summer.

The band got its start eight years ago from a group of players who organized for the first Constitution Day, celebrated at the Firehouse.

Kelliher says most of the group were former players of the Old Moonshiner's Band, a forerunner to the Bella Vista Big Band. The Community band, which holds all its concerts in the summer, also plays for special requests.

As the band continues its performances, Kelliher stresses that the door is "always open" to anyone at any time. He mentions that two players who said they would like to participate won't be able to do so until the 4th of July concert.

That's fine with him, he says, emphasizing that the band exists for the enjoyment of the members and listeners.

"Our players seem to enjoy playing and the people in Bella Vista have been very receptive," he says, "probably because most of them grew up with the old city bands that played in the parks."

The 1994 Summer Concert in the Parks schedule includes the following performances: Tuesday, June 28 — Riordan — 6:30 p.m. - 7:15 p.m.; Monday, July 4 — Metfield Clubhouse — 10:30 a.m. - 11:30 a.m.; Tuesday, July 12 — Branchwood — 6:30 p.m. - 7:15 p.m.; Tuesday, July 26 — Riordan — 6:30 p.m. - 7:15 p.m.; Tuesday, Aug. 9 — Branchwood — 6:30 p.m. - 7:15 p.m.; and Tuesday, Aug. 23 — Metfield — 6:30 p.m. - 7:15 p.m.



Photo/Carroll

Band leader Danny Kelliher leads the Bella Vista Community Band during its first summer concert of the season.

1994


Bill Rieff –
Flute/Piccolo to
Denny's Right



Band at Metfield

1995 or 96 on

July 4th in red, white, and blue



V.E. DAY
 MAY 8, 1945

V.J. DAY
 SEP 2, 1945

1995 MEMORIAL DAY 1995
COMMEMORATING THE 50TH ANNIVERSARY
OF THE END OF WORLD WAR II
HONORING THE SACRIFICE OF
THOSE WHO SERVED
TUESDAY MAY 30, 1995
BELLA VISTA MEMORIAL CEMETERY
SALUTE TO THE UNKNOWN SOLDIER
 9:15 A.M.
MUSIC BY BELLA VISTA COMMUNITY BAND
 9:30 A.M.
BELLA VISTA MEN'S CHORUS
 10:00 A.M.
PRESENTED BY
VETERANS OF FOREIGN WARS POST, 39063
AMERICAN LEGION POST # 341

Daily Record 9-25-96

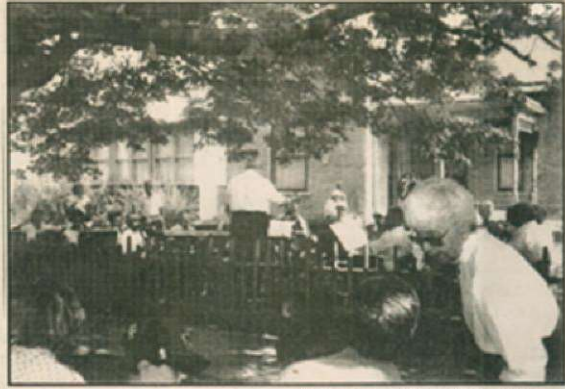


Photo courtesy of Rogers Historical Museum

The Bella Vista Community Band will again perform at the Rogers Historical Museum for "Let's Play Family Day" on Saturday, Sept. 28. Here the band plays for the Hawkins House reopening celebration in 1995.

'Let's Play Family Day' set at Rogers Historical Museum

There will be fun and games for everyone at the Rogers Historical Museum's "Let's Play Family Day" from 10 a.m. to 2 p.m., Saturday, Sept. 28.

Scheduled events include:

- 10:30 a.m. — Elmwood Junior High R-Steppers and Mathias Elementary Skippers
- 10:40 a.m. — Basketball Shootout (ages 12 and under)
- 11 a.m. — Sweet Adelines
- 11:30 a.m. — Basketball Shootout (ages 13-17)
- 11:45 a.m. — Basketball Shootout (ages 18 and over)
- Noon — Bella Vista Community Band
- 1 p.m. — Sporting Costumes of Yesteryear Show
- 1:15 p.m. — Sack Race (ages 12 and under)
- 1:30 p.m. — Three-legged Race (parent and child)
- 1:30 p.m. — Horseshoe Pitch
- 2 p.m. — Drawing for horseshoe game (donation raffle)

Throughout the day there will be appearances by Reagan Royal Jumpers; concession and souvenir sales; free Cracker Jacks (first 500 visitors).

The Rogers Historical Museum is located at 322 S. Second Street in Rogers. For information call 621-1154.



Eureka Springs

3/17/96

THE WEEKLY VISTA, JULY 10, 1996

BV COMMUNITY BAND TO PERFORM



Vista file photo

Bella Vista Community Band will perform at the Peel Gardens Ice Cream Social at the Peel Mansion in Bentonville on Saturday, July 13, from 1 p.m. to 2 p.m. Gates open at noon. Call 273-9664 for more information.

July 13, 1996

Peel Mansion

Bentonville

Kelliher keeps going; the band plays on

SALLY CARROLL
Weekly Vista News Editor

Just because Denny Kelliher is taking a break from directing the Bella Vista Community Band, don't think you can escape his strong recruitment techniques.

"Have you got that alto sax out of the closet yet?" he asks. "That's not good for it, you know. We're still waiting for you to come down and play with us," he says. "What'ya waitin' for?"

Anyone who knows Kelliher at all knows he's always been — and always will be — a professional musician and teacher.

It's his recruitment skills which have enabled him to build bands from scratch, putting together various talent to provide enjoyable music for dancers and listeners alike.

Denny got his musical start as a youngster, taking piano lessons from Sister Cecilia in a Concordia, Kan., grade school. After five and one-half years of personal lessons, the Sister told Denny he was going to start taking lessons with two other little girls in a combined class.

That night, he told his parents he was through with piano

"Taps" and most of the bugle calls. Ole' Sister Cecilia heard him and asked Denny to ask his parents to buy him a cornet.

To make a long story short, a gentleman by the name of Ralph B. Hansen, who was renting a room from the Kelliher family at the time, said he would let Denny play on the one he had back home.

From there, Denny began to draw upon his musical roots. His father was a bass drummer and violinist; his mother, a pianist and Spanish guitarist; his older brother and sister, both trombone players. Denny soon followed in their footsteps, beginning what was to be a life filled with music, music, music.

Denny had just started high school when his father's company moved him to Minneapolis, Kan. Denny stayed behind and lived with a great uncle. After all, you couldn't just move a child in the middle of the school year.

But Denny's father had done some talking and recruiting of his own, and got on the horn to Denny.

"The band director here wants you and needs you. They're getting ready to go to



Courtesy photo

Denny Kelliher, back row, second from right, and his Collegians band toured and played anywhere they could to get the members through college.

the high schoolers, especially coming from a town with a population of about 2,200, Denny says.

When Pearl Harbor was hit by Japanese bombs, however, everything changed. Items such as tractor parts, which his father's business sold, weren't being purchased. The family packed up and moved to Tulsa, Okla.

chestra, for a job.

At that time, though, Joe had all the trumpet players he needed, and once you got in with the orchestra, you didn't quit. "I'll call you when I need you," Joe told Denny.

So Denny decided to put together his own dance band, The Collegians. They played for "anything that got in the way," Denny says.

his fellow Collegians the gig was up and took his place in the Joe Linde Orchestra. He continued to play with the orchestra for the next 38 years while teaching music in the Tulsa, Okla., school system.

Playing with a professional group like the Joe Linde Orchestra was a chance of a lifetime. The group played for parades, football games, private

OCT. 2, 1996 ^{Weekly}
^{Vista}

Kevin D. 'Denny' Kelliher

Kevin D. "Denny" Kelliher, 71, of Bella Vista, died Sept. 24, 1996, in Bella Vista. He was born Feb. 21, 1925, in Mankato, Kan., to Blanche and William Dennis Kelliher.

He married Norma Cantrell on May 24, 1947. The Kelliheres moved to Bella Vista more than 12 years ago from Tulsa, Okla.

He was a member of St. Stephen's Catholic Church and Knights of Columbus. He was a lifetime member of Bella Vista V.F.W. Post 9063 and played trumpet for the Honor Guard, Bella Vista American Legion. He was also a member of Retired Educators Association of Oklahoma, lifetime member of American Federation of Musicians, AARP, and area director for Bella Vista Crime Watch.

He was a veteran of the United States Navy, having served during World War II as musician 2nd class.

He founded the Bella Vista Community Band and was the conductor. He taught for more than 40 years in Tulsa Public Schools as an instrumental music teacher.

Survivors include his wife, Norma; one son, Dennis Michael and wife Virginia Kelliher of Tulsa; two daughters, Carma Lee Kelliher of Broken Arrow, Okla., and Teresa Lynn and husband Graydon Gerow of Tulsa; one sister, Marjorie McIntosh of Tulsa; and two grandchildren.

Daily Record 9-26-96

OBITU

Bella Vista

Kevin D. Kelliher

Kevin D. "Denny" Kelliher, 71, of Bella Vista, died Sept. 24, 1996, in Bella Vista. He was born Feb. 21, 1925, in Mankato, Kan., to Blanche and William Dennis Kelliher.

He had lived in Bella Vista for over 12 years, having moved from Tulsa, Okla. He was a member of St. Stephen's Catholic Church and Knights of Columbus. He was a lifetime member of Bella Vista V.F.W. Post 9063 and played trumpet for the Honor Guard. He was also a member of Bella Vista American Legion, Retired Educators Association of Oklahoma, lifetime member of American Federation of Musicians, AARP, and area director for Bella Vista Crime Watch.

Survivors include his wife, Norma Kelliher; one son, Dennis Michael and wife Virginia Kelliher of Tulsa, Okla.; two daughters, Carma Lee Kelliher of Broken Arrow, Okla., and Teresa Lynn and husband Graydon Gerow of Tulsa, Okla.; one sister, Marjorie McIntosh of Tulsa; and two grandchildren. Memorial Mass will be 11 a.m. Friday, Sept. 27, at St. Stephen's Catholic Church in Bentonville with the Rev. Richard S. Oswald, V.F., presiding. Interment will be at Calvary Cemetery in Tulsa, Okla. Arrangements are by Bella Vista Funeral Home and Crematory.

Memorials may be made to St. Stephen's Church of Bentonville, or the American Cancer Society, care of Jean Tittle, 35 Tewksbury Circle Drive, Bella Vista, Ark. (72714).

Memorial Mass was at 11 a.m. Friday, Sept. 27, at St. Stephen's Catholic Church in Bentonville with the Rev. Richard S. Oswald, V.F., presiding.

Interment was at Calvary Cemetery in Tulsa. Arrangements were by Bella Vista Funeral Home and Crematory.

Memorials may be made to St. Stephen's Church of Bentonville, or the American Cancer Society care of Jean Tittle, 35 Tewksbury Circle Drive, Bella Vista, Ark. (72714).

BELLA VISTA COMMUNITY BAND

1996

INTERIM DIRECTOR:

George Alter - Music Educator, Ret.

FLUTE:

Paula Adkins - B&B Inkeeper

Margaret Alter - Music Ed., Ret.

Rosella Mills - Music Teacher, Ret.

Bill Rees - Music Professor, Ret.

CLARINET:

Curtis Bennett - Computer Programmer

Marlene Cracraft - Music Teacher, Ret.

Frank Irwin - U.S. Postal Service, Ret.

Bobby Power - Music Educator

Gail Power - Teacher

Sarah Raber - Physical Therapist Ass't.

Lee Shriner - Engineer

Bob Vichia - Area Sales Rep. Ret.

ALTO SAXOPHONE

Gene Purcell - Engineer, Ret.

Nona Storck - Bank Customer Ser. Rep.

TENOR SAX

Ron Beall - Auto Sales Manager, Ret.

BARITONE SAX

Nina Erickson - Musician

TRUMPET

Toni Armstrong - International Buyer

Charlie Danielson - Auto Dealer, Ret.

Nevin Ellis - Salesperson, Ret.

Ron Koelling - Personal Computer

Service

Ray Linder - State Music Consultant, Ret.

Clay McCartney - Music Teacher, Ret.

George Sheldon - Optometrist, Ret.

Dick Stitzel - Architect, Ret.

Phyllis Widle - Bank Supervisor, Ret.

Mike Wooters - University Student

F. HORN

Joyce Sheldon - Medical Technologist

BARITONE

Lee Peterson - Denist, Ret.

Tom Raber - Clergyman, Ret.

Charles Whitford - Music Teacher, Ret.

TROMBONE

Roger Bushee - Pressman, Ret.

Alton Foster - Music Teacher, Ret.

Kieth Harris - Realtor, Ret.

Dan Holloway - Engineer, Ret.

Phil Pierce - Contractor, Ret.

Rob Sabata - Banker

Bob Speer - CPA, Ret.

Martha White - Music Teacher

BASSES

Al Bulin - Design Engineer, Ret.

Bill Drake - Economist, Ret.

Mac McKinney - School Adm., Ret.

PERCUSSION

Robert Billman - Office Manager, Ret.

Rose Christiansen - Library Assistant

Nancy Gregg - Laboratory Ass't, Ret.

J.D. Highfill - Electrical Sales Engineer

Kenneth Smykill - Band Director, Ret.

Maryanne VanDyke - Lampshade

Designer

Jack Mitchell - Exporter, Ret.

BELLA VISTA COMMUNITY BAND

7:00 P.M., Oct. 22, 1996

Becker Hall, First United Methodist Church

PROGRAM

The Distant Trumpet (A Chorale Prelude)	Claude T. Smith
Raymond Overture	Ambrose Thomas - arr. Lloyd Conley
Danny Boy	arr. Warren Barker
Feuerfest! (Fire Festival Polka), Op.269	Josef Strauss, trans. by Terry Vosbeon
Count Basic Salute	arr. John Higgins
Sempre Fidelis March	John Philip Sousa
The Sound of Music, Highlights	Rogers & Hammerstein, arr. Howard Cable
The Circus Bee March	Henry Fillmore
Original Dixieland Concerto	John Warrington
Guadalcanal March from "Victory at Sea"	Richard Rogers, arr. Erik Leidzen
Navy Hymn (Eternal Father Strong to Save)	John B. Dykes, arr. James D. Ployhar
The Stars and Stripes Forever March	John Philip Sousa

The Bella Vista Community Band presents this Memorial Concert and dedicates it to the memory of the founder and conductor of the Community Band, Kevin "Denny" Keliher.

Denny taught for more than 40 years as an instrumental music teacher in Tulsa, performed as a professional musician for rodeos, ice shows, stage productions, circuses and in large and small dance bands in Oklahoma and Arkansas as well as teaching trumpet to literally hundreds of budding student musicians. A musician in the U. S. Navy in world war II, Denny served as ceremonial trumpeter for innumerable honor guards and other veteran ceremonies.

Denny is remembered by Bella Vistas not only as the founder and conductor of the Community Band but as the leader of the Hungry Five (a small five piece group capable of playing everything from German Polkas and Waltzes to circus marches) which entertained throughout the village. Tonight's concert includes music representative of these many genres.



Final concert 1996. Note that we fit on stage this year. After 1996 we have to play in front of stage.



Jack Mitchell (drums), Eileen Rees (String Bass), Bobby Power (Clarinet), Charlie Daniels (Trumpet), Ron Beall (Tenor Sax), Phil Pierce (Trombone) 1996

Community Band to perform

The Bella Vista Community Concert Band will perform this summer.

The schedule is:

- 7 p.m. June 25 at the Highlands Clubhouse
- 11 a.m. Thursday, July 4 at the Metfield Clubhouse
- back porch
- 7 p.m. Tuesday, July 16, Bella Vista Country Club (inside)
- 7 p.m. Tuesday, July 30, Highlands Clubhouse
- 7 p.m. Tuesday, Aug. 13 at the Blowing Springs Park

- 7 p.m. Tuesday, Aug. 27 at the Metfield Clubhouse back porch

A buffet, prepared by the Food & Beverage Division, will be offered before the concerts. For reservations, call the respective club.

AARP PROGRAM
Bella Vista Community Band
Riordon Hall - October 4, 1996

Fantasia
Marche Des Parachutistes Belges
Three Pieces For Band From "For Children"

J.S. Bach, Transcribed by Anthenien
Pierre Leemans
Bela Bartok,
Transcribed by Finlayson

1. Dance Song
2. Play Song
3. Reveler's Song

The World Is Waiting For The Sunrise
Folk Song Rhapsody
Highlights From "Gypsy"
Stars and Stripes Forever

Scored by Alfred
Tom Rhodes
Arr. by Higgins
John Philip Sousa

BELLA VISTA COMMUNITY BAND
1996

INTERIM DIRECTOR:

George Alter, Retired Music Educator

FLUTE:

Paula Adkins, B&B Innkeeper
Margaret Alter, Retired Music Educator
Rosella Mills, Retired Music Teacher
Bill Rees, Retired Music Professor

CLARINET:

Curtis Bennett, Computer Programmer
Marlene Cracraft, Retired Music Teacher
/Business Administrator
Frank Erwin, Retired U.S. Postal Service
Bobby Power, Music Teacher
Gail Power, Teacher
Sarah Raber, Physical Therapist Ass't.
Lee Shriner, Engineer
Bob Vicha, Retired Area Sales Rep.

TENOR SAXOPHONE:

Ron Beall, Retired Auto Sales Manager

ALTO SAXOPHONE:

Gene Percell, Retired Engineer
Nona Storck, Bank Customer Service Rep.

FRENCH HORN:

Joyce Sheldon, Medical Technologist

TRUMPET:

Charlie Danielson, Retired Chrysler Dealer
Nevin Ellis, Retired Sales
Ron Koelling, Personal Computer Service
Ray Linder, Retired State Music Consultant
Clay McCartney, Retired Music Teacher
George Sheldon, Retired Optometrist

TRUMPET: (Continued)

Dick Stitzel, Retired Architect
Phyllis Widle, Retired Bank Supervisor
Mike Wooters, University Student

BARITONE:

Lee Peterson, Retired
Tom Raber, Retired Clergyman
Charles Whitford, Retired Teacher

TROMBONE:

Roger Bushee, Retired
Alton Foster, Retired Music Teacher
Keith Harris, Retired Realtor
Dan Holloway, Retired
Phil Pierce, Retired Contractor
Rob Sabata, Banker
Bob Speer, Retired Public Accountant
Martha White, Music Teacher

TUBA:

Al Bulin, Retired Design Engineer
Bill Drake, Retired Economist
Mac McKenney, Retired School Administrator

STRING BASS:

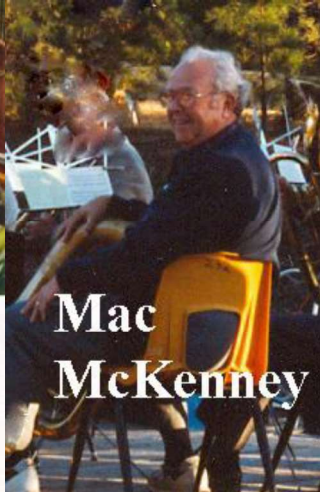
Eileen Rees, Retired Psychology Professor

PERCUSSION:

Robert Billman, Retired Office Manager
Rose Christensen, Library Assistant
Nancy Gregg, Retired Laboratory Assistant
J.D. Highfill, Electrical Sales Engineer
Kenneth Smykill, Retired Band Director
Maryanne VanDyke, Lampshade Designer

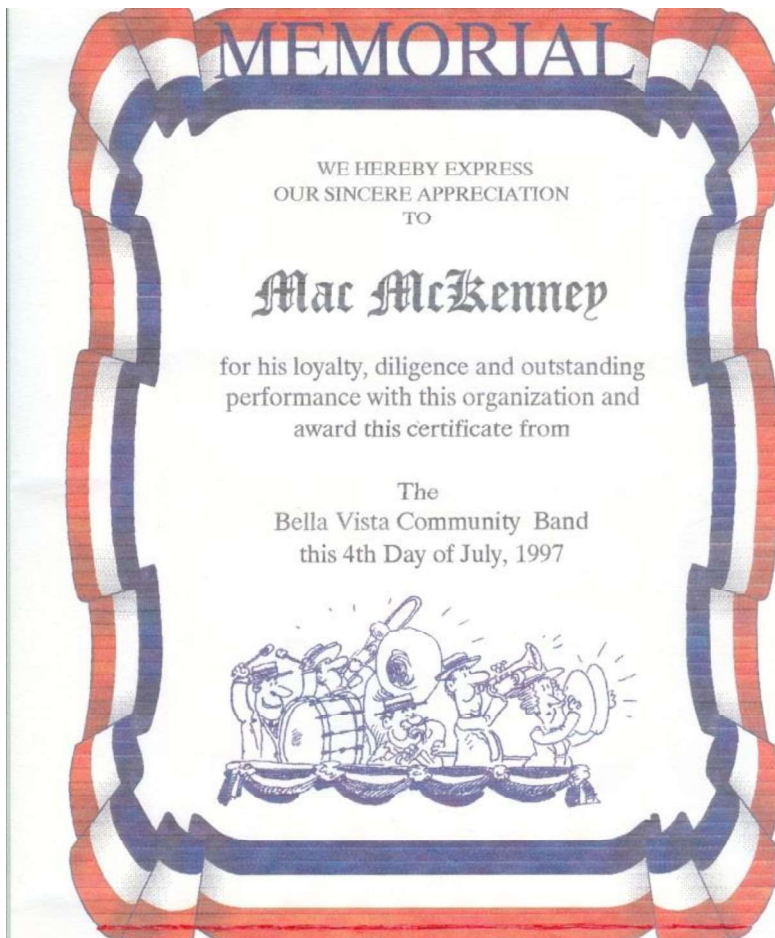


Ray Linder, Pres. presenting
plaque to Marcia McKenney
7-4-97



Mac
McKenney

Mac played tuba and directed the band when Denny was out of town.



**BY-LAWS
OF
BELLA VISTA COMMUNITY CONCERT BAND, INC.**

Article I - Name and Office

The name of this corporation shall be Bella Vista Community Concert Band, Inc. The registered agent and office shall be in Bella Vista, Benton County, Arkansas.

Article II - Purpose

The general purpose of this corporation shall be to advance, develop, and foster an interest in and appreciation of music; and to do any and all things necessary, convenient, useful or incidental to the attainment of its purposes as long as consistent with the provisions of Act 176 of 1963, Act 728 of 1977 and Act 181 of 1977 of the Acts of Arkansas. The purpose of this corporation is restricted so that it shall not carry on any other activities not permitted to be carried on (a) by a corporation exempt from federal income tax under Section 501 (c)(3) of the Internal Revenue Code of 1954 (or the corresponding provision of any future United States Internal Revenue Law) or (b) by a corporation, contributions to which are deductible under Section 170 (c) (2) of the Internal Revenue Code of 1954 (or the corresponding provision of any future United States Internal Revenue Law); and no part of the net earnings of the corporation shall inure to the benefit of, or be distributable to, its members, trustees, officers, or other private persons except that the corporation shall be authorized and empowered to pay reasonable compensation for services rendered and to make payments and distributions in furtherance of the purposes set forth herein.

Article III - Board of Directors

Section 1 - General Powers

Its Board of Directors shall manage the business and affairs of the Corporation.

Section 2 - Composition

The Board of Directors shall consist of 7 members. The Music Director and Librarian will serve as ex-officio members of the Board.

Section 3 - Election and Term of Office

Members of the Board of Directors shall serve staggered terms of two years each with the President, Secretary, and Public Relations being elected in the odd years and Vice President, Treasurer, Brass and Percussion Representative and Woodwind Representative being elected in the even years. The members of the Board of Directors shall take office at the close of the Annual Meeting. The directors shall be elected by the members of the band from its membership. A nominating committee shall nominate at least one eligible person for each office to be filled and report its nominations to the membership at the

Annual Meeting of Bella Vista Community Concert Band, Inc., at which time additional nominations may be made from the floor.

Section 4 - Vacancies

A vacancy on the Board of Directors for any reason shall be filled for the unexpired portion of the term by a majority vote of the Board of Directors at any meeting of the Board.

Section 5 - Compensation

A Director shall neither receive nor be lawfully entitled to receive any direct or indirect pecuniary profits from the operation or activities of this corporation, nor shall he/she receive any compensation for his/her services as Director.

Article IV - Officers

Section 1 - General

The officers of this corporation shall be a President, a Vice-President, a Secretary, a Treasurer, Public Relations, Brass and Percussion Representative, and Woodwind Representative.

Section 2 - Election and Term of Office

The officers shall be elected by the membership at the Annual Meeting. The officers shall take office at the close of the meeting at which they are elected and shall serve for a term of two years or until their successors have been elected and have taken office.

Section 3 - President

The President shall be the Chief Executive Officer of this corporation and shall have the general supervision of all its affairs. He/She shall preside at the meetings of the Board of Directors. He/She shall be an ex-officio member of all committees and shall appoint the chairpersons and members of committees as necessary. The President shall perform such other duties as may be assigned to him by action of the Board of Directors.

Section 4 - Vice-President

The Vice-President shall perform the duties of the President in the absence or inability of the President to do so. He/She shall perform such other duties as the Board of Directors may from time to time determine.

Section 5 - Secretary

The Secretary shall be responsible for keeping the minutes and records of the meetings of the Board of Directors and the Annual Meeting. He/She shall see that all notices are given as required by law, regulation, or the by-laws of the corporation, and shall have charge of the general correspondence of the corporation. He/She shall perform such other duties as may be prescribed by the Board of Directors.

Section 6 - Treasurer

The Treasurer shall collect, receive and deposit funds of the corporation as directed by the Board of Directors. He/She shall keep correct and complete books and records of the account and shall render periodic financial statements to the Board of Directors and such other reports and accounts of the financial condition of the corporation as may from time to time be requested by the Board of Directors. He/She shall perform other duties and have such other powers as the Board of Directors may determine.

Section 7 - Public Relations

The Public Relations officer shall be in charge of the publicity for the corporation and any other public relations matters. He/She shall perform other duties as the Board of Directors may determine.

Section 8 - Brass and Percussion Representative

The Brass and Percussion Representative shall be a member of the brass or percussion sections and shall serve as a liaison to those sections. He/She shall perform other duties as the Board of Directors may determine.

Section 9 - Woodwind Representative

The Woodwind Representative shall be a member of the woodwind section and shall serve as a liaison to that section. He/She shall perform other duties as the Board of Directors may determine.

Section 10 - Vacancies

A vacancy occurring in any office shall be filled for the unexpired term by a majority vote of the Board of Directors in attendance at a meeting of the Board.

Article V - Members

Section 1 - Membership

Any individual who plays a band instrument and who subscribes to the purpose and basic policies of the corporation may become a member of the Bella Vista Community Concert Band.

Article VI - Committees

Section 1 - Standing Committees

The President shall appoint a chairperson and the membership of any necessary committees.

Article VII - Meetings of the Board of Directors

Section 1 - Time and Place

Meetings of the Board of Directors shall be held at least once a year at a time and place to be set by the Board of Directors. Special meetings may be called at any time by the President or by any member of the Board of Directors upon demand of three or more Directors.

Section 2 - Notice

Advance notice of all the meetings of the Board of Directors shall be given to all Board members.

Section 3 - Quorum

A quorum in any meeting of the Board of Directors shall consist of the simple majority of the members of the Board.

Section 4 - Voting

Each member of the Board of Directors shall be entitled to one vote upon any and all occasions. Proxies shall not be accepted at any meeting of the Board of Directors. The action of a majority of the members attending a regularly constituted meeting of the Board of Directors shall be binding upon this corporation.

Article VIII - Meetings of Members of Bella Vista Community Concert Band, Inc.

Section 1 - Time and Place

The Annual Meeting of the members of the Bella Vista Community Concert Band, Inc. shall be held in September of each year. Other meetings may be called at any time by the President.

Section 2 - Notice

Advance notice of all the meetings of the members of the Bella Vista Community Concert Band, Inc. shall be given to the membership.

Section 3 - Quorum

A quorum in any meeting of the members of the Bella Vista Community Concert Band, Inc. shall consist of a simple majority of the members of the corporation.

Section 4 - Voting

Each member of the Bella Vista Community Concert Band, Inc. shall be entitled to one vote upon any and all occasions. The action of a majority of the members attending a regularly constituted meeting of the Bella Vista Community Concert Band, Inc. shall be binding upon this corporation.

Article IX - Finances

Section 1 - Fiscal Year

The fiscal year of this corporation shall be from October 1 to September 30 of each calendar year.

Section 2 - Budget and Funds

The Board of Directors may adopt an annual budget. The funds received by the corporation shall be placed in depositories approved by the Board of Directors. All checks drawn by the corporation shall be signed by the Treasurer or the President, unless otherwise specifically authorized by the Board of Directors. Checks shall be issued for payment of bills owed by the corporation set forth in the budget adopted by the Board of Directors, if any, or pursuant to special appropriations made by the Board of Directors.

Article X - Amendments

Section 1 - Amendments

These By-Laws may be amended at any meeting of the Board of Directors for the corporation by a majority of the Board present provided that notice of the substance of the proposed amendment has been given in writing prior to the meeting.

Article XI - Director

The Director (musical director and conductor) conducts the band and is responsible for artistic matters, including but not limited to, music selection, soloists, rehearsals, and concert presentation.

Article XII - Librarian

The Librarian is responsible for maintaining the music resources of the corporation and distributing these appropriately to the musicians.

Article XIII - Dissolution

In the event of dissolution of the band, members or officers are not entitled to any of its assets. Upon dissolution of the corporation, the Board of Directors shall, after paying or making provisions for the payment of all the liabilities of the corporation, dispose of all the assets of the corporation exclusively for the purposes of the corporation in such manner, or to such charitable, educational, religious, literary, or scientific purposes as shall at the time qualify as an exempt organization or organizations under Section 501[c][3] of the Internal Revenue Code of 1986, or the corresponding provision of any future United States Internal Revenue law as the Board of Directors shall determine. Any such assets not so disposed of shall be disposed of by the Chancery Court of the county in which the principal office of the corporation is then located, exclusively for such purposes or to such organization or organizations as said Court shall determine, which are organized and operated exclusively for such purposes.